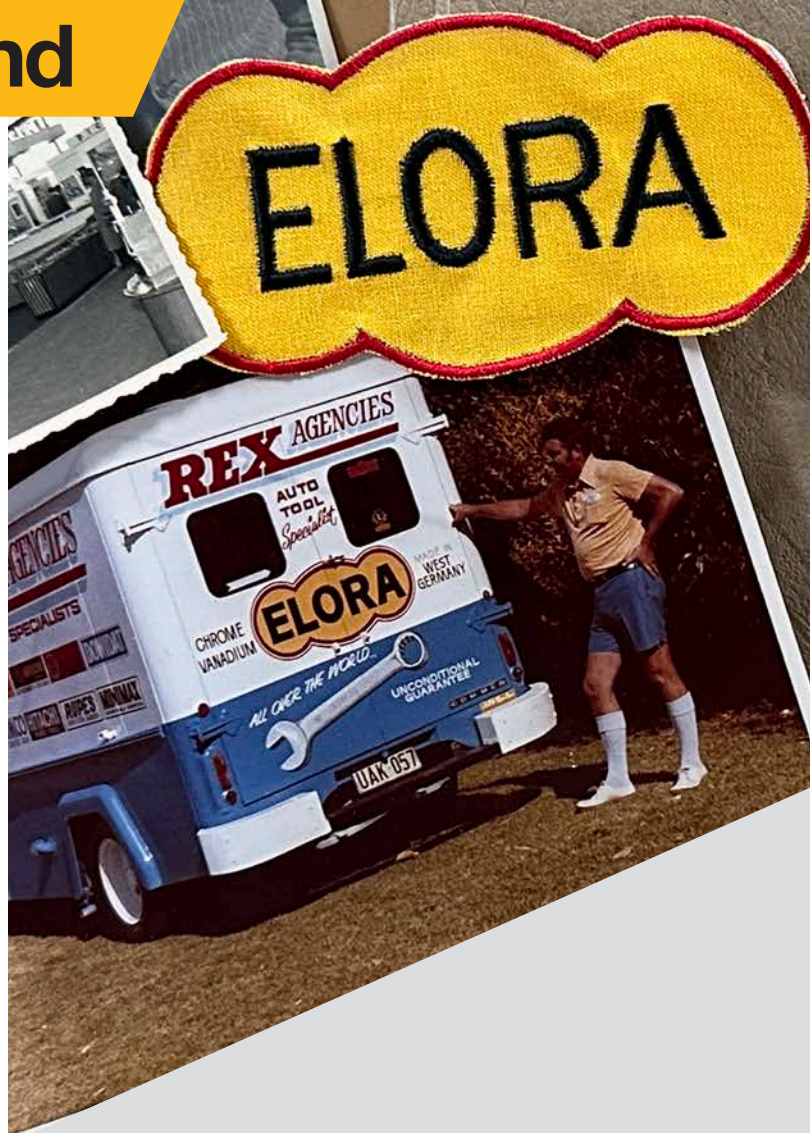


ELORA - The Brand



ELORA

The appearance of the ELORA brand has been constantly maintained and developed over the years, but the brand promise of high quality and functionality has remained unchanged.

“Elora”

ELORA, 5 letters that represent us:
E and RA stand for **Erich Rauch**, founder of ELORA.
LO for **Lüttringhausen**. Since Ü cannot be translated into English, Erich Rauch decided in 1924 on **ELORA**.
The brand was officially registered in 1928.

05



TORQUE WRENCHES

| | |
|------------------------------------|----------|
| Clicking Torque Wrenches _____ | Page 240 |
| Clicking Torque Screwdrivers _____ | Page 244 |
| Clicking Torque Wrenches _____ | Page 245 |
| and insert tools | |
| Indicating Torque Wrenches _____ | Page 251 |
| Power Multipliers _____ | Page 253 |

Why is controlled fastener tightening important?

Anyone involved in modern engineering will already know how important controlled tightening is. To ensure safe, dependable threaded joints, clearly defined tightening forces are essential, irrespective of whether the forces to be applied are large or small (such as is the case with light-weight materials with a low yield point).

The decision on the correct tightening force is subject to a number of factors. These include the fastener's thread pitch, the friction in the thread and the material under the nut or screw head. Once all the relevant factors have been taken into account, this results in the required tightening force that will ensure the bolted joint will not become loose even under dynamic loading. By the same token, this tightening force must not be too high as this can also cause the bolted joint to fail.

What exactly is torque?

Torque is a physical quantity in mechanics. The international unit of measure for moment of force, or torque, is the newton metre, Nm. Torque is defined as a force acting perpendicular to a moment arm.

$$M = F \cdot r$$

A torque wrench is constructed in such a way that it is operated by applying force to the handle. If the lever ratio is changed in any way, this will result in incorrect torque values – a key issue that is referred to in the documentation for all ELORA torque wrenches.

Screw tightening using torque and tightening angle

In many cases, it is sufficient to tighten a bolt or screw to a certain defined torque. To ensure the application of accurate, defined tightening forces, special expanding screws are used. Screws of this type may only be used once. In the first stage, they are tightened to a defined torque and then a specified tightening angle is applied to tighten the screw beyond the elastic limit of the bolt.

This enables a much more accurate tightening force to be achieved.

In addition to an ELORA torque wrench, angle controlled tightening requires a mechanical angle measuring instrument (ELORA no. 2184...).

Conformity Test and Calibration

The DIN EN ISO 6789:2017 has been divided into 2 parts. Part 1 determines requirements for construction and manufacturing, including contents of the declaration of conformity. Part 2, above all, determines the requirements for traceable calibration certificates and includes a procedure to calculate measurement uncertainties.

The ELORA Torque Wrench Calibration Laboratory is covering both parts. Each torque wrench will be delivered with a declaration of conformance, because for most users, this is absolutely sufficient.

In case of not being differently mentioned within inspection equipment monitoring, the DIN EN 6789:2017 specifies a working life of 12 months or 5000 load changes being the interval for conformity test or calibration. The interval starts with the first use of the torque tool.

05



2179-...

TORQUE WRENCH, WITH VERNIER SCALE

- for controlled torque application from 10 – 335 Nm
- main unit Nm with Nonius, secondary unit ft.lb.
- safe locking of the adjusted torque value by securing button at the handle end
- ELORA-No. 2179-S: exchanging the locking knob through the safety cap, the torque can be fixed tamper-resistant
- for clockwise fixing
- with robust, matt steel tube
- fine tooth ratchet, smallest possible swivel angle 8°
- very noticeable and hearable ("click") signal
- nonslip QUATROLIT®-2C-handle
- according to EN ISO 6789:2017 Part 1, Typ II Class A
- with traceable declaration of conformance
- tripping accuracy +/-3% (2179-20 +/- 4%)

Product features

- Broad range of applications
- High degree of availability
- Highly economical
- Very service-friendly
- Complies with DIN EN ISO 6789:2017

| | | |
|------|------|------|
| 6,3 | 10 | 12,5 |
| 1/4" | 3/8" | 1/2" |



2179-S safety cap



| Code | Number | □ | Head | Measuring range Nm | Graduation Nm | Measuring range ft.lb. | Graduation ft.lb. | l/mm | Pieces | Weight/g |
|---------------|----------|--|--------------------|--------------------|---------------|------------------------|-------------------|------|--------|----------|
| 2179000201000 | 2179-20 | 1/4" | Reversible ratchet | 4-20 | 0,05 | 30-180 * | 15 * | 285 | 1 | 540 |
| 2179000601000 | 2179-60 | 3/8" | Reversible ratchet | 10-60 | 0,25 | 9-45 | 4 | 390 | 1 | 1250 |
| 2179001251000 | 2179-125 | 1/2" | Reversible ratchet | 25-125 | 0,25 | 20-90 | 5 | 440 | 1 | 1230 |
| 2179002001000 | 2179-200 | 1/2" | Reversible ratchet | 40-200 | 0,5 | 30-150 | 10 | 460 | 1 | 1366 |
| 2179003351000 | 2179-335 | 1/2" | Reversible ratchet | 65-335 | 1,0 | 50-250 | 10 | 525 | 1 | 1465 |
| 2179000001000 | 2179-S | Safety cap for model 2179 2070 2080 2034 | | | | | | | 1 | 10 |

* unit is in.lb.

High availability and economy

ELORA has succeeded in achieving the ambitious objective of increasing the periods of effective use between readjustments to considerably more than 5000 "clicks" with no errors or loss in accuracy. Extensive long-term tests have demonstrated convincingly that the torque wrenches managed 8000 "clicks" with no problems.

ELORA – Declaration of Conformity

Each hand operated torque tool leaves our works with a declaration of conformance according to DIN EN ISO 6789:2017 Part 1.

ELORA services and controls your torque wrenches quickly and cost-saving. On demand also according to DIN EN ISO 6789:2017 part 2.

This is how you can fix the torque tamper-resistant



Adjust release torque



Fix with locking knob



Untwist locking knob



Tamper-resistant closing by safety cap



No nondestructive removal of the safety cap

Wide range of applications

The torque wrench must work accurately even when subjected to extreme fluctuations in temperature and in environments in which dust and moisture are commonly encountered. This is why ELORA torque wrenches are intensively tested under all conceivable operating conditions at ELORA's own calibration laboratory. The ELORA torque wrenches have all passed the tests with flying colours.

A particularly important feature is the temperature from -15 to +40°C. The design of the tool, the torquing mechanism and the choice of components and materials are further evidence of ELORA's innovative approach to professional products enabling efficient working.

2185-...

TORQUE WRENCH 1/2"

- for controlled torque application from 20 - 350 Nm / 15 - 250 ft.-lb.
- dual measurement scale for Nm and ft.lb.
- scale slider and window with magnifier for quick setting of the target torque value
- locking screw for safe locking of the set torque value
- for clockwise fixing
- with robust, matt steel tube
- all models with fine tooth, reversible ratchet
- very noticeable and audible ("click") signal
- according to DIN EN ISO 6789:2017 Part 1, Typ II Class A
- with traceable declaration of conformance
- tripping accuracy +/- 4%

12,5

1/2"



| Code | Number | □ | Head | Measuring range Nm | Measuring range ft.lb. | l/mm | Pieces | Weight/g |
|---------------|----------|------|--------------------|--------------------|------------------------|------|--------|----------|
| 2185001002000 | 2185-100 | 1/2" | Reversible ratchet | 20-100 | 15-80 | 450 | 1 | 1473 |
| 2185002002000 | 2185-200 | 1/2" | Reversible ratchet | 40-200 | 30-150 | 450 | 1 | 1432 |
| 2185003502000 | 2185-350 | 1/2" | Reversible ratchet | 60-350 | 42-250 | 590 | 1 | 1705 |

2130 - 2160

TORQUE WRENCH

- for controlled torque application from 2,5 - 2000 Nm
- quad measurement scale for Nm, kgm, in-lb and ft-lb
- click type torque wrench with very noticeable and audible ("click") signal
- bi-directional fixing by turning the torque wrench
- extra solid, matt-chrome plated steel construction
- adjustable and safe lockable by crank and the top end of the handle
- according to DIN EN ISO 6789:2017 Part 1, Typ II Class A
- with traceable declaration of conformance
- tripping accuracy +/- 4%

10

12,5

20

25

3/8"

1/2"

3/4"

1"



| Code | Number | □ | Measuring range Nm | Graduation Nm | Measuring range kgm | Graduation kgm | Measuring range in.lb. | Graduation in.lb. | Measuring range ft.lb. | Graduation ft.lb. | l/mm | Pieces | Weight/g |
|---------------|-----------|------|--------------------|---------------|---------------------|----------------|------------------------|-------------------|------------------------|-------------------|------|--------|----------|
| 2130000112000 | 2130-11 | 3/8" | 2,5-11 | 0,5 | 0,3-1,2 | 0,2 | 20-100 | 10 | 2-8 | 1 | 338 | 1 | 672 |
| 2130000332000 | 2130-33 | 3/8" | 7-33 | 1 | 0,7-3,4 | 0,1 | 60-300 | 10 | 5-24 | 1 | 425 | 1 | 1000 |
| 2130000682000 | 2130-68 | 3/8" | 14-68 | 2 | 1,2-7 | 0,2 | 100-600 | 20 | 10-50 | 2 | 500 | 1 | 1000 |
| 2140000682000 | 2140-68 | 1/2" | 14-68 | 2 | 1,4-7 | 0,2 | 125-600 | 20 | 10-50 | 2 | 500 | 1 | 1114 |
| 2140001352000 | 2140-135 | 1/2" | 30-135 | 5 | 3-14 | 1 | 250-1200 | 50 | 40-160 | 2 | 556 | 1 | 1974 |
| 2140002252000 | 2140-225 | 1/2" | 50-225 | 10 | 5-23 | 1 | 400-2000 | 50 | 40-160 | 5 | 600 | 1 | 2000 |
| 2140003302000 | 2140-330 | 1/2" | 70-330 | 10 | 7-35 | 1 | 600-3000 | 100 | 50-250 | 10 | 805 | 1 | 3850 |
| 2150008102000 | 2150-810 | 3/4" | 200-800 | 20 | 22-82 | 2 | 1800-7200 | 200 | 140-600 | 20 | 1070 | 1 | 9000 |
| 2160009402000 | 2160-940 | 1" | 200-1000 | 20 | 22-100 | 2 | 1800-8850 | 200 | 140-740 | 20 | 1400 | 1 | 13800 |
| 2160020002000 | 2160-2000 | 1" | 500-2000 | 50 | 50-200 | 5 | 4500-17500 | 500 | 350-1500 | 50 | 1400 | 1 | 16250 |

You will find VDE Torque Wrenches on page 321.



2070-...

TORQUE WRENCH 3/4" WITH VERNIER SCALE

- for controlled torque application from 100 - 1000 Nm
- main measurement unit for Nm with vernier scale, auxiliary measurement unit for ft.-lb.
- Safe locking of the adjusted torque value by securing button at the handle end
- ELORA-No. 2179-S: exchanging the locking knob through the safety cap, the torque can be fixed tamper-resistant
- bi-directional fixing by turning the torque wrench
- push through ratchet 3/4" with smallest swivel angle 6°
- with robust, matt steel tube
- with very noticeable and audible ("click") signal
- nonslip QUATROLIT®-2C-handle
- according to EN ISO 6789:2017 Part 1, Typ II Class A
- with traceable declaration of conformance
- tripping accuracy +- 4%



20

3/4"



2179-S safety cap

| Code | Number | □ | Head | Measuring range Nm | Graduation Nm | Measuring range ft.lb. | Graduation ft.lb. | l/mm | Pieces | Weight/g | |
|---------------|-----------|--|----------------------|--------------------|---------------|------------------------|-------------------|------|--------|----------|----|
| 2070005001000 | 2070-500 | 3/4" | Push through ratchet | 100-500 | 25 | 80-400 | 1,25 | 910 | 1 | 3600 | |
| 2070008001000 | 2070-800 | 3/4" | Push through ratchet | 160-800 | 40 | 120-600 | 2 | 1220 | 1 | 4550 | |
| 2070010001000 | 2070-1000 | 3/4" | Push through ratchet | 200-1000 | 50 | 150-750 | 2,5 | 1230 | 1 | 4550 | |
| 2179000001000 | 2179-S | Safety cap for model 2179 2070 2080 2034 | | | | | | | | 1 | 10 |

05

2080-2100

TORQUE WRENCH 1" WITH VERNIER SCALE

- for controlled torque application from 400 - 2100 Nm
- main measurement unit for Nm with vernier scale, auxiliary measurement unit for ft.-lb.
- Safe locking of the adjusted torque value by securing button at the handle end
- ELORA-No. 2179-S: exchanging the locking knob through the safety cap, the torque can be fixed tamper-resistant
- for bi-directional fixing by turning the torque wrench
- reversible ratchet 1" with smallest swivel angle 6°
- with very noticeable and audible ("click") signal
- Extension Bar with nonslip QUATROLIT®-2C-handle
- according to EN ISO 6789:2017 Part 1, Typ II Class A
- with traceable declaration of conformance
- tripping accuracy +- 4%



2179-S safety cap

25

1"



| Code | Number | □ | Head | Measuring range Nm | Graduation Nm | Measuring range ft.lb. | Graduation ft.lb. | l/mm | Pieces | Weight/g | |
|---------------|-----------|--|--------------------|--------------------|---------------|------------------------|-------------------|------|--------|----------|----|
| 2080021001000 | 2080-2100 | 1" | Reversible ratchet | 400-2100 | 100 | 300-1500 | 5 | 1945 | 1 | 10750 | |
| 2179000001000 | 2179-S | Safety cap for model 2179 2070 2080 2034 | | | | | | | | 1 | 10 |

2178-20

TORQUE RATCHET, 1/4" WITH VERNIER SCALE

- for controlled torque application from 4 - 20 Nm
- main unit Nm, secondary unit ft.lb, both with Nonius
- safe locking of the set torque value
- for clockwise fixing
- with robust, matt-chrome plated steel tube
- reversible ratchet
- very noticeable and audible ("click") signal
- according to DIN EN ISO 6789:2017 Part 1, Typ II Class A
- Classified according to DIN EN ISO 6789: 2003 Type II Class A
- with traceable declaration of conformance
- Tripping accuracy +- 4%

6,3

1/4"



05

| Code | Number | □ | Measuring range Nm | Graduation Nm | Measuring range ft.lb. | Graduation ft.lb. | l/mm | Pieces | Weight/g |
|---------------|---------|------|--------------------|---------------|------------------------|-------------------|------|--------|----------|
| 2178000201000 | 2178-20 | 1/4" | 4-20 | 0,1 | 3,3-14,4 | 0,07 | 320 | 1 | 900 |

2011-1000

TORQUE SCREWDRIVER, 1/4" WITH VERNIER SCALE

- for controlled torque application from 2 - 10 Nm
- a disengaging coupler indicates the achievement of the release moment and prevents overtightening of the screw
- 1/4" internal hexagon socket for 1/4" bits according to DIN 3126-C 6,3
- bi-directional tightening
- safe locking of the adjusted torque value by securing button at the handle end
- 1/4" square socket at the end of the screwdriver ensuring support of power transmission
- according to EN ISO 6789:2017 Part 1, Typ II Class D
- with traceable declaration of conformance
- tripping accuracy +- 6% from the set value

6,3

1/4"

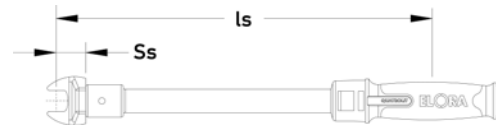


| Code | Number | Measuring range Nm | Graduation Nm | l/mm | Pieces | Weight/g |
|---------------|-----------|--------------------|---------------|------|--------|----------|
| 2011010001000 | 2011-1000 | 2-10 | 0,2 | 160 | 1 | 330 |

2033-20

TORQUE WRENCH WITH RECTANGULAR INTAKE

- for use with ELORA interchangeable spanner heads
- main measurement unit for Nm with vernier scale, secondary measurement unit for ft-lb
- safe locking of the set torque value
- bi-directional fixing by turning the torque wrench
- with robust, matt steel tube
- with very noticeable and audible (‘click’) signal
- nonslip QUATROLIT®-2C-handle
- factory depth gauges: $S_s = 17,5$ mm (9 x 12 mm) and $S_s = 25$ mm (14 x 18 mm)
- according to DIN EN ISO 6789:2017 Part 1, Typ II Class A
- with traceable declaration of conformance
- tripping accuracy +- 4%



| Code | Number | Drive mm | l_s mm | Measuring range Nm | Graduation Nm | Measuring range in.lb. | Graduation in.lb. | l/mm | Pieces | Weight/g |
|---------------|---------|----------|----------|--------------------|---------------|------------------------|-------------------|------|--------|----------|
| 2033000201000 | 2033-20 | 9x12 | 282,5 | 4-20 | 0,1 | 39,8-172,6 | 0,9 | 315 | 1 | 595 |

2034-...

TORQUE WRENCH WITH RECTANGULAR INTAKE

- for use with ELORA interchangeable spanner heads
- main measurement unit for Nm with vernier scale, secondary measurement unit for ft.-lb.
- safe locking of the adjusted torque value by securing button at the handle end
- ELORA-No. 2179-S: exchanging the locking knob through the safety cap, the torque can be fixed tamper-resistant
- for clockwise and anti-clockwise tightening by turning the torque wrench
- with robust, matt steel tube
- with very noticeable and audible (‘click’) signal
- nonslip QUATROLIT®-2C-handle
- factory depth gauges: $S_s = 17,5$ mm (9 x 12 mm) and $S_s = 25$ mm (14 x 18 mm)
- according to DIN EN ISO 6789:2017 Part 1, Typ II Class A
- with traceable declaration of conformance
- tripping accuracy +- 3% (2034-20 +- 4%)



| Code | Number | Drive mm | l_s mm | Measuring range Nm | Graduation Nm | Measuring range ft.lb. | Graduation ft.lb. | l/mm | Pieces | Weight/g |
|---------------|----------|----------|----------|--------------------|---------------|------------------------|-------------------|------|--------|----------|
| 2034000201000 | 2034-20 | 9x12 | 282,0 | 4-20 | 0,05 | 30-180 * | 15 * | 282 | 1 | 440 |
| 2034000601000 | 2034-60 | 9x12 | 314,5 | 10-60 | 0,25 | 9-45 | 4 | 345 | 1 | 1000 |
| 2034001251000 | 2034-125 | 9x12 | 370,5 | 25-125 | 0,25 | 20-90 | 5 | 438 | 1 | 900 |
| 2034002001000 | 2034-200 | 14x18 | 410,0 | 40-200 | 0,5 | 30-150 | 10 | 455 | 1 | 1198 |
| 2034003351000 | 2034-335 | 14x18 | 470,0 | 65-335 | 1,0 | 50-250 | 10 | 515 | 1 | 1305 |

* unit is in.lb.

Expert knowledge on insert tools

When using insert tools, it is essential to take into account the stated extension.

If the extension for the insert tool to be used is exactly the same as the work calibration extension ($S_s = 17,5$ mm for 9 x 12 mm mounts and $S_s = 25$ mm for 14 x 18 mm mounts) of the torque wrench, the torque level you have set will be correct.

Where insert tools having a different extension value are to be used, the set torque M_I will have to be calculated to ensure that the required target torque (M_s) is, in fact, achieved.

This can be done using the following formula:

$$\frac{M_s \times l_s}{l_s + S_v - S_s} = M_I$$

Where:

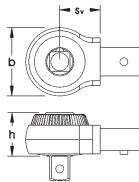
- M_s target torque
- l_s lever length of the torque wrench + works calibration extension
- S_v extension of the insert tool
- S_s works calibration extension ($S_s = 17,5$ mm for 9 x 12 mm mounts and $S_s = 25$ mm for 14 x 18 mm mounts)
- M_I torque setting on the wrench

2072-..., 2076-1

RATCHET INSERT TOOL, FINE TOOTH

- with small robust head
- forged, fine tooth gear wheel with handy metal switching disc
- 5° smallest swivel angle
- with locking pin
- chrome vanadium 31CrV3 / 1.2208
- male square according to DIN 3120, ISO 1174, with ball locking device

| | | |
|------|------|------|
| 6,3 | 10 | 12,5 |
| 1/4" | 3/8" | 1/2" |



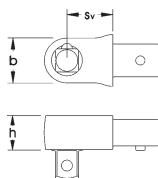
| Code | Number | ■ | Drive mm | S _v mm | b mm | h mm | Pieces | Weight/g |
|---------------|--------|------|----------|-------------------|------|------|--------|----------|
| 2072000010000 | 2072-1 | 1/4" | 9x12 | 17,5 | 25 | 16 | 1 | 80 |
| 2072000020000 | 2072-2 | 3/8" | 9x12 | 17,5 | 34 | 22 | 1 | 160 |
| 2072000030000 | 2072-3 | 1/2" | 9x12 | 17,5 | 34 | 23 | 1 | 170 |
| 2076000010000 | 2076-1 | 1/2" | 14x18 | 25 | 41 | 30 | 1 | 339 |

2074-..., 2078-1

FIXED SQUARE INSERT TOOL

- forged with locking pin
- chrome-plated
- chrome vanadium 31CrV3 / 1.2208
- male square according to DIN 3120, ISO 1174, with ball locking device

| | | |
|------|------|------|
| 6,3 | 10 | 12,5 |
| 1/4" | 3/8" | 1/2" |

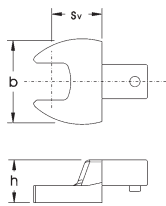


| Code | Number | ■ | Drive mm | S _v mm | b mm | h mm | Pieces | Weight/g |
|---------------|--------|------|----------|-------------------|------|------|--------|----------|
| 2074000010000 | 2074-1 | 1/4" | 9x12 | 17,5 | 13 | 12 | 1 | 50 |
| 2074000020000 | 2074-2 | 3/8" | 9x12 | 17,5 | 19 | 16 | 1 | 89 |
| 2074000030000 | 2074-3 | 1/2" | 9x12 | 17,5 | 19 | 16 | 1 | 115 |
| 2078000010000 | 2078-1 | 1/2" | 14x18 | 25 | 25 | 19 | 1 | 206 |

2052-..., 2056-...

OPEN END SPANNER INSERT TOOL

- attention, changes setting value for ELORA-Nr. 2052-14 -19 and 2056-27 - 41
- forged
- with locking pin
- chrome-plated
- chrome vanadium 31CrV3 / 1.2208

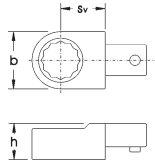


| Code | Number | mm | Drive mm | S _v mm | b mm | h mm | Pieces | Weight/g |
|---------------|---------|----|----------|-------------------|------|------|--------|----------|
| 2052000070000 | 2052-7 | 7 | 9x12 | 17,5 | 20,7 | 14,7 | 1 | 46 |
| 2052000080000 | 2052-8 | 8 | 9x12 | 17,5 | 22 | 14,7 | 1 | 47 |
| 2052000090000 | 2052-9 | 9 | 9x12 | 17,5 | 23,5 | 14,7 | 1 | 45 |
| 2052000100000 | 2052-10 | 10 | 9x12 | 17,5 | 24,8 | 14,7 | 1 | 49 |
| 2052000110000 | 2052-11 | 11 | 9x12 | 17,5 | 26 | 14,7 | 1 | 52 |
| 2052000120000 | 2052-12 | 12 | 9x12 | 17,5 | 27,5 | 14,7 | 1 | 47 |
| 2052000130000 | 2052-13 | 13 | 9x12 | 17,5 | 28,8 | 14,7 | 1 | 53 |
| 2052000140000 | 2052-14 | 14 | 9x12 | 20 | 31,5 | 14,7 | 1 | 64 |
| 2052000150000 | 2052-15 | 15 | 9x12 | 20 | 33,5 | 14,7 | 1 | 65 |
| 2052000160000 | 2052-16 | 16 | 9x12 | 20 | 36 | 14,7 | 1 | 71 |
| 2052000170000 | 2052-17 | 17 | 9x12 | 20 | 37,7 | 14,7 | 1 | 69 |
| 2052000180000 | 2052-18 | 18 | 9x12 | 20 | 39 | 14,7 | 1 | 70 |
| 2052000190000 | 2052-19 | 19 | 9x12 | 20 | 41,6 | 14,7 | 1 | 74 |
| 2056000130000 | 2056-13 | 13 | 14x18 | 25 | 29,6 | 21,5 | 1 | 128 |
| 2056000140000 | 2056-14 | 14 | 14x18 | 25 | 31,3 | 21,5 | 1 | 125 |
| 2056000150000 | 2056-15 | 15 | 14x18 | 25 | 33,4 | 21,5 | 1 | 126 |
| 2056000160000 | 2056-16 | 16 | 14x18 | 25 | 35,8 | 21,5 | 1 | 135 |
| 2056000170000 | 2056-17 | 17 | 14x18 | 25 | 37 | 21,5 | 1 | 146 |
| 2056000180000 | 2056-18 | 18 | 14x18 | 25 | 38,6 | 21,5 | 1 | 144 |
| 2056000190000 | 2056-19 | 19 | 14x18 | 25 | 40,6 | 21,5 | 1 | 147 |
| 2056000210000 | 2056-21 | 21 | 14x18 | 25 | 45,2 | 21,5 | 1 | 162 |
| 2056000220000 | 2056-22 | 22 | 14x18 | 25 | 47,3 | 21,5 | 1 | 170 |
| 2056000240000 | 2056-24 | 24 | 14x18 | 25 | 50,8 | 21,5 | 1 | 187 |
| 2056000270000 | 2056-27 | 27 | 14x18 | 32,5 | 58,7 | 21,5 | 1 | 252 |
| 2056000300000 | 2056-30 | 30 | 14x18 | 32,5 | 62,7 | 21,5 | 1 | 266 |
| 2056000320000 | 2056-32 | 32 | 14x18 | 32,5 | 65,2 | 21,5 | 1 | 265 |
| 2056000340000 | 2056-34 | 34 | 14x18 | 32,5 | 66,5 | 21,5 | 1 | 252 |
| 2056000360000 | 2056-36 | 36 | 14x18 | 32,5 | 66,5 | 21,5 | 1 | 255 |
| 2056000380000 | 2056-38 | 38 | 14x18 | 32,5 | 66,5 | 21,5 | 1 | 244 |
| 2056000410000 | 2056-41 | 41 | 14x18 | 40 | 82,5 | 21,5 | 1 | 333 |

2062-..., 2066-...

RING SPANNER INSERT TOOL

- attention, changes setting value for ELORA-Nr. 2066-27 to 41
- forged
- with locking pin
- chrome-plated
- chrome vanadium 31CrV3 / 1.2208



| Code | Number | mm | Drive mm | S _v mm | b mm | h mm | Pieces | Weight/g |
|---------------|---------|----|----------|-------------------|------|------|--------|----------|
| 2062000070000 | 2062-7 | 7 | 9x12 | 17,5 | 13,1 | 14,7 | 1 | 48 |
| 2062000080000 | 2062-8 | 8 | 9x12 | 17,5 | 13,1 | 14,7 | 1 | 47 |
| 2062000100000 | 2062-10 | 10 | 9x12 | 17,5 | 17,6 | 14,7 | 1 | 51 |
| 2062000110000 | 2062-11 | 11 | 9x12 | 17,5 | 19 | 14,7 | 1 | 51 |
| 2062000120000 | 2062-12 | 12 | 9x12 | 17,5 | 20,3 | 14,7 | 1 | 61 |
| 2062000130000 | 2062-13 | 13 | 9x12 | 17,5 | 21,1 | 14,7 | 1 | 61 |
| 2062000140000 | 2062-14 | 14 | 9x12 | 17,5 | 23,4 | 14,7 | 1 | 64 |
| 2062000150000 | 2062-15 | 15 | 9x12 | 17,5 | 24,4 | 14,7 | 1 | 65 |
| 2062000160000 | 2062-16 | 16 | 9x12 | 17,5 | 26,4 | 14,7 | 1 | 68 |
| 2062000170000 | 2062-17 | 17 | 9x12 | 17,5 | 27,4 | 14,7 | 1 | 69 |
| 2062000180000 | 2062-18 | 18 | 9x12 | 17,5 | 28,9 | 14,7 | 1 | 71 |
| 2062000190000 | 2062-19 | 19 | 9x12 | 17,5 | 31 | 14,7 | 1 | 74 |
| 2062000210000 | 2062-21 | 21 | 9x12 | 17,5 | 33,4 | 14,7 | 1 | 81 |
| 2062000220000 | 2062-22 | 22 | 9x12 | 17,5 | 35 | 14,7 | 1 | 82 |
| 2066000130000 | 2066-13 | 13 | 14x18 | 25 | 21 | 21,5 | 1 | 135 |
| 2066000140000 | 2066-14 | 14 | 14x18 | 25 | 23 | 21,5 | 1 | 138 |
| 2066000150000 | 2066-15 | 15 | 14x18 | 25 | 26 | 21,5 | 1 | 138 |
| 2066000160000 | 2066-16 | 16 | 14x18 | 25 | 26 | 21,5 | 1 | 139 |
| 2066000170000 | 2066-17 | 17 | 14x18 | 25 | 27,5 | 21,5 | 1 | 144 |
| 2066000180000 | 2066-18 | 18 | 14x18 | 25 | 29,5 | 21,5 | 1 | 146 |
| 2066000190000 | 2066-19 | 19 | 14x18 | 25 | 31 | 21,5 | 1 | 150 |
| 2066000210000 | 2066-21 | 21 | 14x18 | 25 | 33 | 21,5 | 1 | 160 |
| 2066000220000 | 2066-22 | 22 | 14x18 | 25 | 35 | 21,5 | 1 | 155 |
| 2066000240000 | 2066-24 | 24 | 14x18 | 25 | 38 | 21,5 | 1 | 170 |
| 2066000270000 | 2066-27 | 27 | 14x18 | 31 | 42 | 21,5 | 1 | 217 |
| 2066000300000 | 2066-30 | 30 | 14x18 | 31 | 45,1 | 21,5 | 1 | 221 |
| 2066000320000 | 2066-32 | 32 | 14x18 | 31 | 48 | 21,5 | 1 | 224 |
| 2066000340000 | 2066-34 | 34 | 14x18 | 31 | 51 | 21,5 | 1 | 255 |
| 2066000360000 | 2066-36 | 36 | 14x18 | 31 | 53 | 21,5 | 1 | 248 |
| 2066000410000 | 2066-41 | 41 | 14x18 | 31 | 59,3 | 21,5 | 1 | 255 |

2063-...

OPEN RING SPANNER INSERT TOOL

- forged
- with locking pin
- chrome-plated
- chrome vanadium 31CrV3 / 1.2208



| Code | Number | Ø mm | Drive mm | S _v mm | b mm | h mm | Pieces | Weight/g |
|---------------|---------|------|----------|-------------------|------|------|--------|----------|
| 2063000100000 | 2063-10 | 10 | 9x12 | 17,5 | 21,2 | 14,5 | 1 | 63 |
| 2063000110000 | 2063-11 | 11 | 9x12 | 17,5 | 22,6 | 14,5 | 1 | 63 |
| 2063000120000 | 2063-12 | 12 | 9x12 | 17,5 | 24,1 | 14,5 | 1 | 65 |
| 2063000130000 | 2063-13 | 13 | 9x12 | 17,5 | 25,2 | 14,5 | 1 | 64 |
| 2063000140000 | 2063-14 | 14 | 9x12 | 17,5 | 27,3 | 14,5 | 1 | 68 |
| 2063000160000 | 2063-16 | 16 | 9x12 | 17,5 | 30,1 | 14,5 | 1 | 71 |
| 2063000170000 | 2063-17 | 17 | 9x12 | 17,5 | 31,6 | 14,5 | 1 | 73 |
| 2063000180000 | 2063-18 | 18 | 9x12 | 17,5 | 33,3 | 15 | 1 | 78 |
| 2063000190000 | 2063-19 | 19 | 9x12 | 17,5 | 34,6 | 15 | 1 | 80 |
| 2063000210000 | 2063-21 | 21 | 9x12 | 17,5 | 37,7 | 15 | 1 | 81 |
| 2063000220000 | 2063-22 | 22 | 9x12 | 17,5 | 39,3 | 15 | 1 | 86 |

05

2071-...

ADAPTER

- attention, changes setting value
- for use with insert tools 9x12 mm and 14x8 mm
- forged
- chrome-plated
- chrome vanadium 31CrV3 / 1.2208



| Code | Number | Female Square mm | Male Square | S _v mm | b mm | h mm | Pieces | Weight/g |
|---------------|--------|------------------|-------------|-------------------|------|------|--------|----------|
| 2071000010000 | 2071-1 | 9x12 | 14x18 | 22 | 22 | 17 | 1 | 94 |
| 2071000020000 | 2071-2 | 14x18 | 9x12 | 35,25 | 30 | 23 | 1 | 127 |

2034-200 S13M

TORQUE WRENCH SET

- 13 pcs.
- in black plastic case with foamed inlay



05

| Code | Number | Contents | Pieces | Weight/g |
|---------------|---------------|---|--------|----------|
| 2034501301200 | 2034-200 S13M | 2034-200 Torque Wrench with Rectangular Intake 2076-1 Ratchet Insert Tool, fine tooth 1/2" 14x18 2056- Open End Spanner Insert Tool 13, 14, 16, 17, 18, 19, 22, 24, 27, 30, 32 mm Open End Spanner Insert Tool 14x18 | 1 | 3500 |



2420-...

ELOTRONIC TORQUE WRENCH

- indicating torque wrench for controlled tightening from 20 - 340 Nm
- measurement units: Nm, ft-lb or in-lb
- bi-directional fixing
- huge easy to read 4 digit numerical LCD Display
- audible buzzer and optical signal (3 bright LED's) when target torque is reached
- 2 different measurement modes (Track Mode, Peak Hold)
- Battery operated (4xAA batteries)

12,5

1/2"



- serial computer interface, 2 way communication with computer, printer (protocol RS232C 9600BPS, 8,1,n)
- fine tooth ratchet, smallest possible swivel angle 5°
- male square according to DIN 3120 A 12,5, ISO 1174, with ball locking device
- with robust, steel tube with plastic handle
- according to EN ISO 6789:2017 Part 1, Typ I Class B
- with traceable declaration of conformance
- Display deviation +- 2%

| Code | Number | □ | Measuring range Nm | Measuring range in.lb. | Measuring range ft.lb. | l/mm | Pieces | Weight/g |
|---------------|-------------|------|--------------------|------------------------|------------------------|------|--------|----------|
| 2420002002000 | 2420-EDS200 | 1/2" | 20-200 | 180-1800 | 15-150 | 458 | 1 | 1260 |
| 2420003402000 | 2420-EDS340 | 1/2" | 34-340 | 300-3000 | 25-250 | 559 | 1 | 1550 |

05

2400-...

ELOMETER TORQUE WRENCH WITH DRAG INDICATOR

- indicating torque wrench with dial gauge and drag indicator
- for controlled tightening from 1,8 - 2800 Nm
- measurement units: Nm, ft.-lb. or in.-lb.
- bi-directional fixing
- with fixed head square according to DIN 3120, ISO 1174
- ELORA No. 2400 UDS 1400 and 2400-UDS 2800 with additional audible buzzer
- in dependence EN ISO 6789:2017 part 1, type I class B
- with traceable declaration of conformance
- Display deviation +- 3%

2400-UDS2800

- 6,3
- 10
- 12,5
- 1/4"
- 3/8"
- 1/2"
- 20
- 25
- 3/4"
- 1"



| Code | Number | □ | Measuring range Nm | Graduation Nm | Measuring range in.lb. | Graduation in.lb. | Measuring range ft.lb. | Graduation ft.lb. | Signal | l/mm | Pieces | Weight/g |
|---------------|--------------|------|--------------------|---------------|------------------------|-------------------|------------------------|-------------------|---------------------|------|--------|----------|
| 2400000092000 | 2400-UDS9 | 1/4" | 1,8-9 | 0,2 | 15-75 | 1 | - | - | - | 270 | 1 | 725 |
| 2400000182000 | 2400-UDS18 | 3/8" | 4-18 | 0,5 | 30-150 | 2 | - | - | - | 270 | 1 | 725 |
| 2400000302000 | 2400-UDS30 | 3/8" | 6-30 | 0,5 | 50-250 | 5 | - | - | - | 270 | 1 | 725 |
| 2400002402000 | 2400-UDS240 | 1/2" | 50-250 | 5 | - | - | 35-175 | 5 | - | 560 | 1 | 1400 |
| 2400003502000 | 2400-UDS350 | 1/2" | 70-350 | 10 | - | - | 50-250 | 5 | - | 560 | 1 | 1400 |
| 2400004802000 | 2400-UDS480 | 3/4" | 100-480 | 10 | - | - | 70-350 | 10 | - | 675 | 1 | 3200 |
| 2400014002000 | 2400-UDS1400 | 1" | 300-1400 | 25 | - | - | 200-1000 | 20 | optical and audible | 1970 | 1 | 9000 |
| 2400028002000 | 2400-UDS2800 | 1" | 600-2800 | 50 | - | - | 400-2000 | 40 | optical and audible | 3200 | 1 | 21000 |

2184-...

TORQUE ANGLE GAUGE

- for controlled screw tightening with fitting torque wrench at specified torque and torque angle
- torque angle from 0 – 360°
- 1/2" reading accuracy 2 degrees, 3/4" reading accuracy 5 degrees
- maximum load 1/2" 390 Nm, 3/4" 1330 Nm
- with flexible magnetic holder
- square with ball locking device
- **attention, do not exceed the maximum torque of the specific torque wrench!**

12,5

20

1/2"

3/4"



05

| Code | Number | □ | ■ | Graduation | ∅ | l/mm | Pieces | Weight/g |
|---------------|--------|------|------|------------|----|------|--------|----------|
| 2184000012000 | 2184-1 | 1/2" | 1/2" | 2° | 68 | 360 | 1 | 333 |
| 2184000022000 | 2184-2 | 3/4" | 3/4" | 5° | 90 | 380 | 1 | 865 |

2601-...

TORQUE MULTIPLIER

- up to 10.000 Nm
- planetary gear (1-, 2- or 3-stepped)
- specially hardened gear wheels
- permanent internal greasing
- sliding bearings on drive side and power take-off side
- overload protection (one additional sun wheel with overload cutout is included)
- exchangeable drive heads
- matt chrome-plated /phosphated surfaces
- torque multipliers 2601-3 until 2601-6 are all fitted with a return stop
- bi-directional actuation
- highest torque, high accuracy better than +-5% tolerance
- **attention, only for static actuation!**
- in waterproof case



- Product-Features:**
- for clockwise and anticlockwise use
 - no extremely long levers required any more
 - uniform transmission of forces protects nuts and bolts
 - reduced risk of personal injury
 - compact, durable construction
 - low weight
 - no external power supply required
 - guaranteed accuracy: ±5%
 - long-term accuracy
 - low-maintenance construction
 - good value for money
 - ideal in conjunction ELORA torque wrenches
 - a range of supports available



05

| Code | Number | max. output capacitance Nm | max. input capacitance Nm | ○ | ■ | Torque Ratio | Gear reduction | Return stop | Ø mm | l/mm | Weight without case and brace support | Weight with case and brace support | Pieces |
|---------------|--------|----------------------------|---------------------------|------|--------|--------------|----------------|-------------|------|------|---------------------------------------|------------------------------------|--------|
| 2601100010000 | 2601-1 | 1500 | 416 | 1/2" | 1" | 1:3,6 | 4:1 | - | 90 | 150 | 3000 | 5400 | 1 |
| 2601100020000 | 2601-2 | 1500 | 416 | 3/4" | 1" | 1:3,6 | 4:1 | - | 90 | 150 | 3000 | 5400 | 1 |
| 2601100030000 | 2601-3 | 3500 | 269 | 3/4" | 1" | 1:13 | 16:1 | x | 95 | 200 | 5200 | 7400 | 1 |
| 2601100040000 | 2601-4 | 4500 | 264 | 3/4" | 1.1/2" | 1:17 | 20:1 | x | 120 | 215 | 7700 | 14500 | 1 |
| 2601100050000 | 2601-5 | 7000 | 159 | 3/4" | 1.1/2" | 1:44 | 59:1 | x | 130 | 272 | 13000 | 25500 | 1 |
| 2601100060000 | 2601-6 | 10000 | 181 | 3/4" | 1.1/2" | 1:55 | 74:1 | x | 148 | 272 | 14500 | 27000 | 1 |

2602

TORQUE MULTIPLIER

- perfect tool for heavy duty vehicles
- 1 step planetary gear
- 2 braces included
- robust construction
- surfaces matt-chrome plated/ gunmetal-finish
- bi-directional actuation
- accuracy better than +-4%
- **attention, only for static actuation!**
- in black plastic case



| Code | Number | max. output capacitance Nm | max. output capacitance ft. lb. | ○ | ■ | Torque Ratio | Gear reduction | Pieces | Weight/g |
|---------------|--------|----------------------------|---------------------------------|------|----|--------------|----------------|--------|----------|
| 2602000001000 | 2602 | 2700 | 2000 | 3/4" | 1" | 1:4,33 | 5:1 | 1 | 7400 |